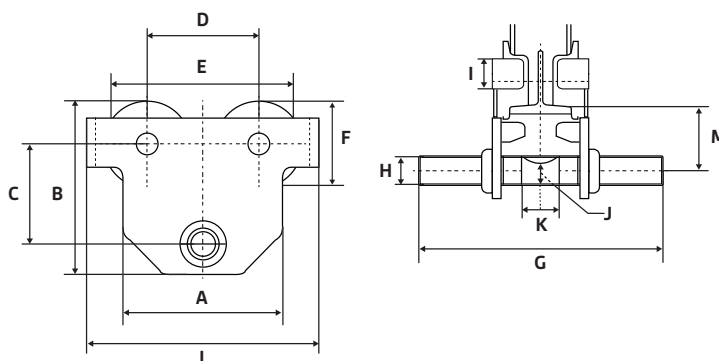


Push trolley | DLK | Rod | 500 - 2.000 kg

- The distance between the wheels is easy to adjust and can be used on many kinds of I-beams
- It can be driven in a small turning diameter
- The hinge links the left and right side plate to guarantee equal force
- It travels along the lower edge of the I-beam
- The wheels are ball-bearing for smooth operation
- Compact design, smaller body and lightweight for low headroom applications
- The trolley has a rod as attachment point

Type	DLK
Brand	Mitari
Temperature range	-10 °C to + 40 °C
Norm hoist	NEN-EN 12100-1/2
HS code	8716800000



WLL kg	Beam width mm	A mm	B mm	C mm	D mm	E mm	F mm	G mm	H mm	I mm	J mm	K mm	L mm	M mm	Weight kg
500	50-220	300	175	100	98	175	75	320	27	35	20	35	195	75	9
1.000	58-220	310	180	105	105	185	81	320	30	37	24	40	215	75	11
2.000	60-220	320	215	120	125	220	105	322	39	40	32	48	255	85	19